

Tanks & Drainage Solutions



Welcome

Agrii Tanks & Drainage Solutions (ATDS) have been delivering advice, storage tanks and drainage products to UK farmers, contractors, and the construction industry for over 40 years.

We work closely with our manufacturing partners and suppliers enabling us to provide excellent customer service, technical knowledge, competitive pricing, and an extensive product range.

How to Order

You can order products featured through your usual Agrii contact or by calling:

**Customer Services Team on
01480 418333**

or email:

ATDS@agrii.co.uk



Contents

STORAGE TANKS

Above Ground Storage Tanks:

Water/Fertiliser/Rainwater Tanks	4
Horizontal Transport Tanks	6
Water/Rainwater Tanks	7
Rainwater Harvester Kits	8
Tank Fittings & Accessories	10
Underground Water Storage	15

Fuel Storage & Dispensing:

Bunded Oil Tanks	18
Bunded Fuel Tanks	20
Transfuel Tank	22
Portable Diesel Tanks	23
AdBlue Stations	24

Wastewater Treatment:

Septic Tanks	26
Sewage Treatment Plants	27
Pump Stations	31

CROP SOLUTIONS

PolyDry Crop Drying and Conditioning	32
--------------------------------------	----

SURFACE WATER MANAGEMENT

Land Drain Coils	34
Twinwall Pipes & Fittings	36
Stormwater Attenuation and Soakaway Crates	38
Geotextiles & Geogrid	40
Pipe Drain Inlets & Headwalls	41

UNDERGROUND DRAINAGE

Drain Pipe & Fittings	42
Gullies	45
Access & Inspection	46
Covers & Frames	47
Drainage Adaptor/Couplings	48
Fernco Flood Protection	49

MAINS SUPPLY

MDPE Water Pipe	52
Water Fitting Accessories	53
Boundary Boxes & Accessories	62
Utility Ducting & Accessories	63

GREEN HORIZONS

Green Horizons	65
----------------	----

Meet the Team



Jackie Thompson
ATDS Business Manager
07866 139443



Audrey Christie (Croy)
Depot Manager and
Pipe & Tank Sales
01463 217057



Phil Laing
Pipe & Tank Sales
01307 464949



Kevin McAllister (Perth)
Pipes & Fittings Specialist
07766 366699



Liz McCubbin (Perth)
Pipe & Tank Sales
07593 382116



Robert Smith (Perth)
Tank Fittings Specialist
07771 975268



John Coles (Drem)
Pipe & Tank Sales
01620 842170



Matthew Hodgson (Coldstream)
Pipe & Tank Sales
01890 882960



John Charlton (Yorkshire)
Crop Input Specialist
07469 284165



Gavin Taylor (Lincoln)
Crop Input Specialist Manager
07973 854046



Sophie Dillon
(West Midlands/North West)
Crop Input Specialist
07826 956226

Water/Fertiliser/ Rainwater Tanks

ENDURAMAXX
FLUID MANAGEMENT INNOVATION

WRAS
WATER REGULATIONS ADVISORY SCHEME

The Enduramaxx range of tanks provides you with the ideal solution for storage of drinking water (potable), rainwater, liquid fertilisers, molasses and liquid foodstuffs in almost any location.

Enduramaxx tanks are manufactured to hold chemicals and liquids with a specific gravity of up to 2 SG. Available in a range of sizes up to 30,000 litres, these tanks have been engineered and constructed in one piece, with no joins or seams eliminating the requirement for centre support poles. They are made from the highest-grade materials using the latest technologies in rotationally moulded UV stabilisation, ensuring excellent resistance. The high specification design of every product guarantees the exact solution to any requirement.

TANK FEATURES:

- + Manufactured from UV stabilised polyethylene.
- + Rotationally moulded one-piece design.
- + Ribbed design provides added strength and rigidity.
- + Moulded lifting lugs on top of the tank allow easy lifting when empty or can be used as tie down points.
- + Large 620 mm lid as standard.
- + 2" BSP male outlet.
- + 2 year warranty (conditions apply).

POPULAR USES FOR THESE TANKS INCLUDE:

- + Rainwater harvesting (being non-chlorinated is better for crops and plants).
- + Civil engineering applications where mains water is not available.
- + Toilet flushing in industrial or commercial premises.
- + Irrigation and/or wash down facilities.
- + Equine and agricultural.
- + Horticultural and market garden applications.
- + Cost effective watering system.
- + Crop sprayer tank.





LITRES	LID (mm)	OUTLET	EMPTY WEIGHT (kg)	DIMENSIONS (mm)
3,000	455	2" male	80	1400 Dia x 2205 H
3,000-LOW PROFILE	620	2" male	80	1900 Dia x 1270 H
3,500	620	2" male	75	1900 Dia x 1550 H
4,000	620	2" male	95	1900 Dia x 1925 H
4,000	620	2" male	95	1700 Dia x 2300 H
4,500	620	2" male	95	1700 Dia x 2520 H
5,000	620	2" male	120	1900 Dia x 2270 H
5,000-LOW PROFILE	620	2" male	140	2600 Dia x 1370 H
6,000	620	2" male	150	1900 Dia x 2635 H
7,000	620	2" male	160	2450 Dia x 1865 H
7,500-LOW PROFILE	620	2" male	180	2600 Dia x 1870 H
10,000	620	2" male	190	2400 Dia x 2600 H
10,000	620	2" male	240	1900 Dia x 3770 H
10,000-LOW PROFILE	620	2" male	240	2600 Dia x 2290 H
12,500	620	2" male	260	2600 Dia x 2900 H
12,000	620	2" male	280	2400 Dia x 2970 H
15,000	620	2" male	320	2400 Dia x 3720 H
15,000-LOW PROFILE	620	2" male	320	2600 Dia x 3100 H
20,000	620	2" male	420	2850 Dia x 3620 H
22,000	620	2" male	450	3450 Dia x 2800 H
25,000	620	2" male	530	2700 Dia x 4720 H
25,000-LOW PROFILE	620	2" male	540	3450 Dia x 3100 H
30,000	620	2" male	600	3450 Dia x 3650 H

Horizontal Transport Tanks

Horizontal transport tanks used for transporting liquid such as water and fertiliser. These tanks are designed to mount on to flat surfaces using the unique pin mounting system without the need for steel mounting straps.

IDEAL FOR:

- + Bulk water storage.
- + Brewing and winemaking sectors.
- + Temporary, or back-up water supply for events and festivals.
- + Food industry.
- + Domestic water solutions.
- + Civil engineering where mains water is unavailable.

CODES	LITRES	LID (mm)	OUTLET	WEIGHT (kg)	DIMENSIONS (mm)
SQUAT TANKS					
17402401	240	255	1.5"	20	925 x 710 x 510
17404001	400	255	1.5"	30	1600 x 710 x 510
HORIZONTAL TRANSPORT TANKS					
17100501	500	355	1.5"	30	1190 x 1050 x 590
17101001	700	355	1.5"	35	1190 x 1050 x 760
17101201	1,200	455	2"	65	1980 x 1150 W x 855
17101501	1,500	455	2"	75	1980 x 1150 W x 1035
17102501	2,000	455	2"	120	2055 x 1420 x 1105
17123001	3,000	455	2"	150	2500 x 1700 x 1125
17103501	4,000	455	2"	200	2500 x 1700 x 1425
17103701	5,000	455	2"	240	2500 x 1700 x 1690
17104001	6,000	455 Stainless Steel	2"	280	3300 x 1800 x 1525
17104501	8,000	455 Stainless Steel	2"	300	3300 x 1800 x 1990
1710501	10,000	455 Stainless Steel	2"	560	4200 x 1900 x 1935



5,000L Horizontal Transport Tank



8,000L Fertiliser Bowser



3,000L Fertiliser Tank

Water/Rainwater Tanks

Harlequin
StorageTanks
RELIABLE CONTAINERS

WRAS
WATER REGULATIONS ADVISORY SCHEME

The Harlequin range of premium quality 'Above Ground Water Tanks' include the popular larger tanks for commercial applications and small slimline tanks for domestic applications.

The above ground water storage tanks range from 920 litres up to 9,250 litre models and are available as potable or non-potable. The tanks are suitable for agricultural, domestic, commercial and industrial purposes.

BENEFITS:

- + **Various installations** – can be used for agricultural, domestic, commercial or industrial premises.
- + **KIWA and WRAS approved** – all Harlequin potable water tanks have been confirmed to comply with UK Water Supply Regulations 1999, Water Byelaws 2004 Scotland and Water Supply Regulations (Northern Ireland).
- + **Non-corrosive** – manufactured from medium density polyethylene (MDPE), Harlequin tanks will never corrode.
- + **Protection against sunlight** – manufactured from UV stabilised polymer protecting the tank against potentially damaging effects of sunlight.
- + **Slimline and low-profile options** – for more awkward installations, slim and low to ground tank options are available.

STANDARD WITH ALL WATER TANKS:

- + Made from medium density polyethylene.
- + 2" outlet; 2" BSP(F) thread.
- + 2" screened vent.
- + Moulded in lifting eyes.



5,700L
Vertical



1,200L
Low Profile



1,100L
Slimline

DESCRIPTION	DIMENSIONS (mm)	CAPACITY (L)	WEIGHT (kg)
920L Slimline Potable & Non-Potable	L 1530 x W 715 x H 1165	951	58
1,100L Slimline Potable & Non-Potable	L 1650 x W 690 x H 1420	1,097	60
1,200L Low Profile Potable & Non-Potable	L 1795 x W 1250 x H 1170	1,170	58
1,400L Vertical Potable & Non-Potable	Dia 1290 x H 1400	1,417	38
1,800L Vertical Potable & Non-Potable	Dia 1400 x H 1570	2,043	50
2,700L Vertical Potable & Non-Potable	Dia 1580 x H 1760	2,817	65
3,800L Vertical Potable & Non-Potable	Dia 1800 x H 1880	3,915	85
5,700L Vertical Potable & Non-Potable	Dia 2000 x H 2290	6,100	120
7,500L Vertical Potable & Non-Potable	Dia 2085 x H 2530	7,370	170
9,250L Vertical Potable & Non-Potable	Dia 2300 x H 2550	9,328	240

Rainwater Harvesting Kits

Rainwater filters are important to make the water usable in any rainwater harvesting system and are used to filter debris from the rainwater as it flows from the roof before it enters the storage tank. The filters prevent leaves and moss entering the tank and save a build-up of sediment in the tanks.

They have 2 inlets for incoming water which are 4" and 6" on the larger 800 m² roof area filter. The 450 m² and 800 m² roof filters have an overflow taking the leaves and moss away to a drain or soakaway and an outlet in the bottom of the filter for water to enter the storage tank.

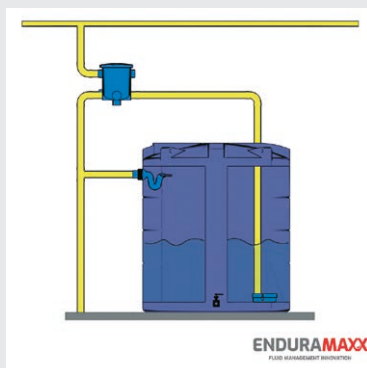
The water that runs down to the bottom of the tank and fills it through the calmed inlet from the bottom, which oxygenates the water and helps prevent it from stagnating. When the tank is full the overflow siphon diverts the excess water to a drain or soakaway. The siphon design also draws dust and pollen which may be on the water surface first.

These filters are suitable for new and existing rainwater storage tanks.

Filter Kit B

FEATURES

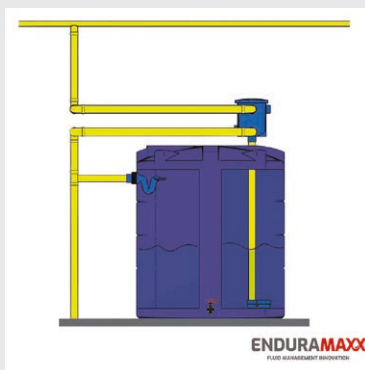
- + Designed for roof sizes up to a maximum of 450 m².
- + Two step cleaning system independent of flow rate ensuring high filtering efficiency.
- + Filter cartridge location assists continuous removal of dirt.
- + Frost resistant.
- + Self-cleaning and low maintenance.
- + Filter insert easily removable for cleaning.
- + Suitable for 110 mm (4") downpipes.
- + Filter unit weight 6.2 kg.
- + Siphon overflow with skimming inlet.
- + Siphon overflow pipe to fit a 130 mm hole in storage tank wall.
- + Calmed inlet to prevent incoming water disturbing any sediment in tank.
- + Calmed inlet also ensures fresh water is supplied to lower area of the tank resulting in complete and regular replenishment of stored water.



Filter Kit C

FEATURES

- + Designed for roof sizes up to a maximum of 800 m².
- + For installation in a pilot shaft or against the wall in frost-protected areas.
- + Available pre-installed in pilot shaft.
- + Two step cleaning system independent of flow rate ensuring high filtering efficiency.
- + Filter cartridge location assists continuous removal of dirt.
- + Suitable for 110 mm (4") and 160 mm (6") down pipes.
- + Filter unit weight 16 kg.
- + Siphon overflow with skimming inlet.
- + Siphon overflow pipe to fit a 130 mm hole in storage tank wall.
- + Calmed inlet to prevent incoming water disturbing any sediment in tank.
- + Calmed inlet also ensures fresh water is supplied to lower area of the tank resulting in complete and regular replenishment of stored water.



Tank Fittings & Accessories

Honda GX - 2" Pacer S Series Pump

CODE	DESCRIPTION
200P-5	Honda GX - 2" Pacer S Series Pump



200P-5

SPECIFICATIONS:

- + 2.5 Bar max pressure.
- + 871 Lpm max flow.
- + Self-priming (after initial priming).
- + Honda GX160 petrol engine.
- + Polyester body, EPDM seals.
- + 2" female pump inlet.
- + 2" female pump outlet.
- + Carbon ceramic mechanical seal.
- + Polyester 975 impeller.
- + Engine fitted with oil alert.

Suction/Delivery Hose

2" SPECIFICATIONS:

- + 6 Bar @ 23°C working pressure.
- + 51.6 mm id - 4.1 mm wall thickness.
- + Reinforced PVC delivery/suction hose.
- + -10°C to 55°C working temperature.
- + Max complete length = 30 m.

3" SPECIFICATIONS:

- + 4 Bar @ 23°C working pressure.
- + 76 mm id - 5.2 mm wall thickness.
- + Reinforced PVC delivery/suction hose.
- + -10°C to 55°C working temperature.
- + Max complete length = 30 m.



CODE	DESCRIPTION
CD20	2" Suction/Delivery Hose
CD30	3" Suction/Delivery Hose

Ball Valves

2" Female x 2" Female BSP Ball Valve

SPECIFICATIONS:

- + 16 Bar pressure rating.
- + BSP Female Threads.
- + 3x 8 mm Threaded Holes.



3" Female x 3" Female BSP Bolted Ball Valve

SPECIFICATIONS:

- + 16 Bar pressure rating.
- + BSP Female Threads.
- + Compatible with other BSP threaded fittings.



2" Female x 2" Female Stainless Steel Ball Valve

SPECIFICATIONS:

- + PN63 Pressure Rated.
- + BSP Female Threads.
- + WRAS Approved.
- + Lockable.



CODE	DESCRIPTION
P178520	2" Female x 2" Female BSP Ball Valve
P178530	3" Female x 3" Female BSP Bolted Ball Valve
P178520-SS	2" Female x 2" Female Stainless Steel Ball Valve

Banjo Fittings

CODE	DESCRIPTION
9901-200AP-BSP	Banjo Cam Lever Adaptor, 2" Female Thread
9901-300AP-BSP	Banjo Cam Lever Adaptor, 3" Female Thread
9901-200BP-BSP	Banjo Cam Lever Coupler, 2" BSP Male Thread
9901-300BP-BSP	Banjo Cam Lever Coupler, 3" BSP Male Thread
9901-200CP	Banjo Cam Lever, 2" Hose Barb
9901-300CP	Banjo Cam Lever, 3" Hose Barb
9901-200DP-BSP	Banjo Cam Lever Coupling, 2" BSP Female Thread
9901-300DP-BSP	Banjo Cam Lever Coupling, 3" BSP Female Thread
9901-200EP	Banjo Cam Lever Adaptor, 2" Hose Barb to 2" Adaptor
9901-300EP	Banjo Cam Lever Adaptor, 3" Hose Barb to 3" Adaptor
9901-200FP-BSP	Banjo Cam Lever Adaptor, 2" BSP Male Thread to 2" Adaptor
9901-300FP-BSP	Banjo Cam Lever Adaptor, 3" BSP Male Thread to 3" Adaptor
9901-200CAPP	Banjo Cam Lever Coupler, 2" Blanking Cap
9901-300CAPP	Banjo Cam Lever Coupler, 3" Blanking Cap
9901-303B200A	Banjo Cam Lever Coupler, 2" Adaptor, 3" Coupling



9901-200AP-BSP



9901-300AP-BSP



9901-200BP-BSP



9901-300BP-BSP



9901-200CP



9901-300CP



9901-200DP-BSP



9901-300DP-BSP



9901-200EP



9901-300EP



9901-200FP-BSP



9901-300FP-BSP



9901-200CAPP



9901-300CAPP



9901-303B200A

Snaplock Fittings

CODE	DESCRIPTION
A200P	Snaplock Camlock, 2" Male to Female Thread
A300P	Snaplock Camlock, 3" Male to Female Thread
F200P	Snaplock Cam Lever Adaptor, 2" BSPM Thread
F300P	Snaplock Cam Lever Adaptor, 3" BSPM Thread
B200P	Snaplock Camlock Adaptor, 2" Female to Male
B300P	Snaplock Camlock Adaptor, 3" Female to Male
C2009	Snaplock Cam Lever, 2" Hose Barb
C300P	Snaplock Cam Lever, 3" Hose Barb
C200-SS	Snaplock Cam Lever, 2" Stainless Steel Hose Barb Female
E200P	Snaplock Cam Lever, 2" Hose Barb to 2" Adaptor
E300P	Snaplock Cam Lever, 3" Hose Barb to 3" Adaptor
E200-SS	Snaplock Cam Lever, 2" Stainless Steel Hose Barb Male
DC200P	Snaplock Cam Lever, 2" End Cap
DC300P	Snaplock Cam Lever, 3" End Cap
D200P	Snaplock Cam Lever Coupler, 2" BSPF Female to 2" Coupling
D300P	Snaplock Cam Lever Coupler, 3" BSPF Female to 3" Coupling



A200P



A300P



B200P



B300P



C2009



C300P



C200-SS



D200P



D300P



DC200P



DC300P



E200P



E300P



E200-SS



F200P



F300P

Ancillary Products

For all your farming needs



Agrii offer a wide range of essential ancillary products to support growers.

These include;

- ✚ Safety equipment
- ✚ Chemical storage
- ✚ Pots, labels & compost
- ✚ Crop covers
- ✚ Silage wrap
- ✚ and more!

Scan or click on the QR code to download our brochure or email info@agrii.co.uk to request a hard copy brochure.



Underground Water Storage

Potable Water Supply

BENEFITS:

- + Containers made from robust, long-life polyethylene.
- + Food-safe design with test certificate in accordance with KTW recommendation.
- + Easy to transport, install and quick to fit due to low weight.
- + Easy to clean due to smooth tank interior surfaces.
- + To store drinking water.
- + 15 year warranty.



2,200L Diamant



Carat XL 10,000L



1,500L Platin

DESCRIPTION	DIMENSIONS (mm)	WEIGHT (kg)
2,200L Diamant Potable Set	L 2450 x W 1150 x H 1760	125
3,350L Diamant Potable Set	L 2450 x W 1400 x H 2010	150
4,800L Diamant Potable Set	L 2450 x W 1700 x H 2310	180
6,500L Diamant Potable Set	L 2450 x W 2000 x H 2610	260
Carat XL Potable 10,000L	L 3520 x W 2240 x H 2895	455
1,500L Platin Potable Set	L 2100 x W 1250 x H 1015	82
3,000L Platin Potable Set	L 2450 x W 2100 x H 1050	180
5,000L Platin Potable Set	L 2890 x W 2300 x H 1315	250

*These tanks include telescopic dome shaft maxi with cover and 2" inlet/outlet connection

Shaft for Harvesting Spring Water

- + Ventilating and de-sanding spring water.
- + Food-safe design with test certificate.
- + Universal use for regulating, sampling, breaker shaft, or spring measurement.
- + Continuously variable installation depth using the telescopic dome shaft 1,200 - 1,500 mm.
- + Cover locked with special key.
- + Flush with ground level.
- + Including shaft ventilation.
- + Easy to clean with one hand.



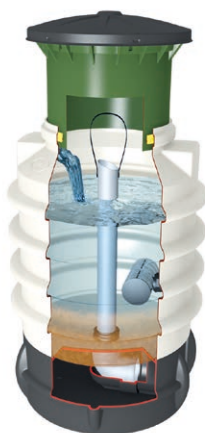
DIMENSIONS:

Diameter: 730 mm

Height: 1092 mm

Weight: 34 kg

Volume: 200 litres



Underground Non-Potable Tanks

CARAT TANKS

DESCRIPTION	DIMENSIONS (mm)	WEIGHT (kg)
2,700L Carat Non-Potable	L 2080 x W 1565 x H 2010	120
3,750L Carat Non-Potable	L 2280 x W 1755 x H 2200	150
4,800L Carat Non-Potable	L 2280 x W 1985 x H 2430	185
6,500L Carat Non-Potable	L 2390 x W 2190 x H 2710	220
Carat XL Non-Potable 8,500L	L 3500 x W 2040 x H 2695	380
Carat XL Non-Potable 10,000L	L 3520 x W 2240 x H 2895	455
Carat XXL Non-Potable 16,000L*	L 4590 x W 2500 x H 3160	770

*The Carat XXL underground tank has been specially developed for rainwater harvesting and for use as a retention cistern, firefighting water tank, process water tank and septic tank. It is available in sizes from 16,000 to 122,000 litres. Suitable for vehicle loading / lorry loading.



Carat 2,700L



Carat XL 10,000L



Carat XXL 16,000L



Carat XXL 36,000
Firefighting Tank

Platin Flat Tanks

The Platin flat rainwater tank was specially developed for rainwater harvesting. It is available in sizes of between 1,500 and 7,500 litres.

A low installation depth is needed; therefore, a short installation time and low costs are granted.

- + Low installation depth means a short installation time and low installation costs.
- + Integrated filter technology due to tank filter packages.
- + Suitable for vehicle loading (in combination with a Telescopic dome shaft with cast iron lid).
- + Groundwater-stable up to the tank shoulder thanks to **extremely stable design**.
- + Easy transport due to low weight.
- + Secure investment thanks to **15-year warranty**.
- + The Platin tank **can be extended** in any way.

DESCRIPTION	DIMENSIONS (mm)	WEIGHT (kg)
2,700L Platin Non-Potable	L 2100 x W 1250 x H 1015	82
3,000L Platin Non-Potable	L 2450 x W 2100 x H 1050	180
5,000L Platin Non-Potable	L 2890 x W 2300 x H 1315	250
7,500L Platin Non-Potable	L 3600 x W 2250 x H 1565	380
Platin XL Non-Potable 10,000L	L 4900 x W 2250 x H 1910	460
Platin XL Non-Potable 15,000L	L 7500 x W 2250 x H 1910	710
Platin XXL Non-Potable 20,000L*	L 9405 x W 2250 x H 1910	890

*Platin XXL is available up to 65,000L.



Platin 2,700L



Platin XL 15,000L



Platin XL 15,000L
Firefighting Tank

Bunded Oil Tanks



The Harlequin range of Oil Tanks have been designed and manufactured to exceed the most technical, environmental, and regulatory requirements.

Harlequin®
StorageTanks
 RELIABLE CONTAINERS

They are used primarily for the storage of heating oil for domestic and commercial purposes.

The Harlequin range of plastic bunded oil tanks are specifically designed to be environment friendly. The bunded design helps avert pollution incidents should there be a leak and the hassle of costly environmental clean-up operations.

They are available from 650 litres, up to 9,250 litre models.

DESCRIPTION	DIMENSIONS (mm)	CAPACITY (L)	WEIGHT (kg)
650 ITE/HQi Slimline	L 1715 x W 670 x H 1330	673	116
1000 ITE/HQi Slimline	L 2150 x W 690 x H 1420	1055	132
1100 ITE/HQi Slimline	L 1880 x W 890 x H 1595	1097	135
1200 ITE/HQi Low Profile	L 1900 x W 1600 x H 960	1317	130
1225 ITE/HQi Slimline	L 2110 x W 840 x H 1525	1248	150
1300 ITE/HQi Slimline	L 2100 x W 950 x H 1540	1344	170
1400 ITE/HQi Horizontal	L 1900 x W 1250 x H 1420	1452	135
1450 ITE/HQi Vertical	Dia 1560 x H 1590	1498	112
2000 ITE/HQi Horizontal	L 2360 x W 1315 x H 1415	2092	180
2500 ITE/HQi Horizontal	L 2460 x W 1435 x H 1470	2571	215
2525 ITE/HQi Slimline	L 2450 x W 1200 x H 1685	2550	235
3500 ITE Horizontal	L 2450 x W 1770 x H 1890	3471	275
5400 ITE Vertical	Dia 2575 x H 2100	5307	325
7500 ITE Vertical	L 2940 x W 2305 x H 2820	8088	505
9250 ITE Vertical	L 3140 x W 2510 x H 2820	9382	600



Bunded Oil Tanks

OPTION 1:

HQI Bunded Oil Tank Only

SPECIFICATION:

- + Integrally bunded.
- + Bottom outlet with 1" BSP(F) thread.
- + 16" lockable access lid.
- + 4" lockable inspection cap (fill point for 350 model).
- + 2" BSP(M) fill point (excludes 350 model).
- + 32 mm hole with cover for electronic gauge.
- + Inner tank vent (excludes 350 model).



1000 ITT/HQI Slimline



1200 ITT/HQI Low Profile

OPTION 2:

ITE Bunded Oil Tank with Gauge and Bottom Outlet Kit

SPECIFICATION:

- + Integrally bunded.
- + Bottom outlet with 1" BSP(F) thread.
- + 16" lockable access lid.
- + 4" lockable inspection cap.
- + 2" BSP(M) fill point.
- + 32 mm hole with cover for electronic gauge.
- + Inner tank vent.
- + Ultrasonic contents gauge with remote display.
- + Bottom outlet fitting kit.
- + LRC overfill prevention probe.



1450 ITE/HQI Vertical



2500 ITE/HQI Horizontal

Bunded Fuel Tanks

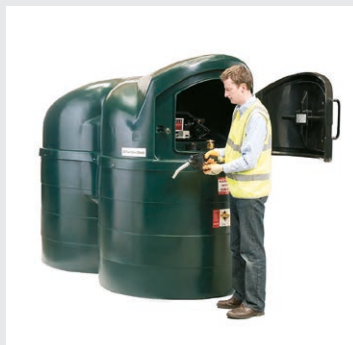


The Harlequin range of Fuel Stations are the ultimate in diesel dispensing tanks and technology.

Featuring forecourt style refuelling convenience and a range of added value technologies as standard, these high specification diesel tanks offer a quick and easy, safe, and secure on-site fuel storage solution for smaller commercial, industrial, and agricultural storage installation requirements.

Customers who do not require the added value technologies featured in the top of the range fuel stations, may be interested in fuel points, which feature the same high-quality mouldings and materials as fuel stations but have been designed with more basic fuel storage requirements in mind.

Harlequin fuel stations are available in capacities ranging from 1,300 litres to 9,250 litres and feature integral bunding as standard.



KEY BENEFITS:

- + **Convenient bulk storage** – as well as being much more convenient to have a dedicated dispensing point, bulk storage allows for significant reduction in cost.
- + **Non-corrosive** – manufactured from Medium Density Polyethylene (MDPE), Harlequin tanks will not corrode.
- + **Integrally bunded** – designed to protect the surrounding environment, all tanks are bunded preventing pollution if the internal tank was ever to leak.
- + **Excellent design** – easy access doors and lids with all tanks having a secure way to be locked.
- + **Forecourt style refuelling** – it gives the option of forecourt style refuelling.

DESCRIPTION	DIMENSIONS (mm)	CAPACITY (L)	WEIGHT (kg)
1300 SLFS/SLFP Slimline	L 2300 x W 950 x H 1850	1344	175
1400 FS/FP	L 1610 x W 1570 x H 1880	1498	150
2500 SLFS/SLFP Slimline	L 2550 x W 1385 x H 1985	2530	210
2500 FS/FP	L 2060 x W 2020 x H 1880	2571	200
3500 FS/FP	L 2200 x W 2200 x H 1930	3553	250
5000 FS	L 2720 x W 2220 x H 2360	5307	420
7500 FS	L 2940 x W 2305 x H 3020	8088	500
9250 FS	L 3140 x W 2510 x H 2820	9250	600

Bunded Fuel Tanks

OPTION 1:

Fuel Station (FS)

High specification diesel tanks offering a quick and easy, safe, and secure on-site fuel storage solution for smaller commercial, industrial, and agricultural requirements.

PRODUCT CODES:

1300SLFS • 1400FS • 2500SLFS • 3500FS
5000FS • 7500FS • 9250FS

STANDARD EQUIPMENT:

- + 56L/min 230V fuel pump.
- + Mechanical flow meter for smaller FS up to 5,000 litres.
- + 10 Micron particulate and water filter.
- + 4 m length, 1" delivery hose with auto shut-off nozzle – 1300SLFS and 1400FS.
- + 6m length, 1" delivery hose with auto shut-off nozzle – 2500FS and above.
- + Bulkhead light.
- + 2" BSP(M) fill point.
- + 4" lockable inspection cap.
- + Bund Monitor – 5000, 7500 and 9250FS.
- + Large lockable access door – up to 5000FS.
- + Mechanical overfill prevention valve – 7500 and 9250FS.
- + LRC overfill prevention probe – 5000, 7500 and 9250FS.
- + Electronic Level Gauge.
- + Fuel Management System – 7500FS and 9250FS – 240V.
- + Lockable equipment cabinet – 7500 and 9250FS.
- + HVO Kit – 5000, 7500 and 9250FS.

OPTIONAL EXTRAS:

- + 72L/min fuel pump.
- + Fuel Management System upgrade available on smaller FS up to 5,000 litres.
- + 8 m cabinet mounted auto hose reel available on 5000, 7500 and 9250FS.
- + HVO Kit – up to 3500FS.

OPTION 2:

Fuel Point (FP)

Straightforward diesel storage and dispensing systems featuring the same high-quality mouldings and materials as higher specification fuel stations. Suitable for farms, haulage and businesses.

PRODUCT CODES:

1300SLFP • 1400FP • 2500SLFP • 2500FP
3500FP • 5000FP AGRI

STANDARD EQUIPMENT:

- + 56L/min 230V fuel pump.
- + 4 m length, 1" delivery hose with auto shut-off nozzle – up to 5000FP AGRI.
- + 6m length, 1" delivery hose with auto shut-off nozzle – 5000FP AGRI.
- + 2" BSP(M) fill point.
- + 4" lockable inspection cap.
- + Large lockable access door.

OPTIONAL EXTRAS:

- + Mechanical flow meter.
- + 10 Micron particulate fuel filter.
- + Electronic level gauge.
- + HVO Kit.



1400 FP/FS



2500 SLFS/SLFP Slimline



5000 FP/FS



9250 FS

Transportable Fuel Tanks

Transfuel Bunded Tank

The Harlequin Transfuel Bunded Tank is the only portable diesel tank that full complies with the Control of Pollution (Oil Storage) Regulations (2001) (England and Wales) (N. Ireland 2010) (Water Environment (Oil Storage) (Scotland) Regulations 2006).

There is no need for additional bunding or spill trays, and no specialist driver qualifications or vehicle modifications are necessary to use the Transfuel Bunded Tank.

STANDARD FEATURES:

- + Moulded from durable medium density polyethylene material.
- + Integrally bunded.
- + 56L/Min 12 Volt fuel pump with 4 m cable and clips.
- + 4m delivery hose with auto shut-off dispensing nozzle.
- + ¾" suction hose with non-return valve and strainer.
- + ¾" lever type isolation valve.
- + Contents gauge.
- + 2" BSP(M) fill point.
- + 10kPa pressure relief vent.
- + Lockable lid.
- + 4 way forklift access.
- + Strapping points.



TANK DIMENSIONS:

Width: 1290 mm

Depth: 1010 mm

Overall Height: 1090 mm

Brimful Capacity: 436 L

Nominal Capacity: 414 L

Net Weight: 110 kg

Portable Diesel Tanks

Perfect solution for easy on-site refuelling

Harlequin's Portable Diesel Storage and Dispensing Tanks are designed to provide safe and easy storage and dispensing of Diesel on site.

Made from tough and durable MDPE, it is very robust and designed for a very long life. It comes equipped with a 50 L/Min high speed pump, a convenient lockable access lid, high quality delivery hose, forklift channels and strapping points.

It is easy to refill from a static storage tank. It can be simply loaded onto a vehicle such as a pickup truck, trailer or van saving valuable time. Specialist driver qualifications or vehicle modifications are not required to transport or use the tank. The range includes a 220 and 440 litre version.

Portable Diesel Storage & Dispensing Tanks

FEATURES:

- + Moulded from durable medium density polyethylene material.
- + 50 L/Min 12 Volt pump with 4 m cable and clips.
- + 5 m delivery hose with auto shut-off dispensing nozzle.
- + ¾" suction pipe with non-return valve and strainer.
- + 4" filler cap.
- + Splash-proof vent.
- + Forklift channels.
- + Strapping points.



220 L DIMENSIONS:

Width: 800 mm

Depth: 600 mm

Height: 645 mm

Weight: 28 kg

Brimful Capacity: 220 L

440 L DIMENSIONS:

Width: 1000 mm

Depth: 800 mm

Height: 790 mm

Weight: 45 kg

Brimful Capacity: 440 L

AdBlue® Stations



WHAT IS ADBLUE®?

AdBlue® is a trade name for AUS32 (Aqueous Urea Solution 32.5%). It is injected into the exhaust gases of modern diesel engines as a post combustion process. Its purpose is to reduce the percentage of harmful NOx (Nitrous Oxides) present in vehicle emissions.

STORING ADBLUE®

AdBlue® is very sensitive to contamination, it is important that it is stored in a containment system which can protect it from contamination threats.

BENEFITS OF A HARLEQUIN ADBLUE® TANK:

Cheaper Bulk Storage – as well as being safer and cleaner than purchasing AdBlue® in cans, drums and IBCs, the bulk storage of AdBlue® can allow you to significantly reduce your cost base.

Best Storage & Dispensing Material – manufactured from inert materials ensures no reaction takes place with AdBlue®. Tank equipment is also selected to ensure no salts form within the AdBlue®.

Non-Corrosive – manufactured from Medium Density Polyethylene (MDPE) your Harlequin tank will not corrode.

Integrally Bunded – designed to protect the surrounding environment, all tanks are bunded preventing pollution if the internal tank was ever to leak.

Excellent Design – easy access doors and lids with all tanks having a secure way to be locked.

Contents Monitoring – our Blue Stations come with quality contents monitoring gauges.

STANDARD WITH ALL STATIONS:

- + Integrally bunded.
- + 35 L/min pump (230V).
- + 6 m length delivery hose.
- + Stainless steel auto shut-off delivery nozzle.
- + Suction hose with non-return valve and strainer.
- + 2" stainless steel fill point c/w dry break coupling.
- + 4" inspection port.
- + Inner tank vent.
- + Lockable door.

OPTIONAL EXTRA:

- + Digital flow meter.



1400 BS



2500 BS SLIMLINE

DESCRIPTION	DIMENSIONS (mm)	CAPACITY (L)	WEIGHT (kg)
1400 BS	L 1610 x W 1570 x H 1880	1498	150
2500 BS Slimline	L 2550 x W 1385 x H 1985	2530	210
2500 BS	L 2060 x W 2020 x H 1880	2571	200
3500 BS	L 2200 x W 2200 x H 2060	3553	250
5000 FS	L 2720 x W 2220 x H 2360	5307	420
9250 FS	L 3140 x W 2510 x H 2820	9255	600



2500 BS



5000 BS



9250 BS

Septic Tanks



Floating and removable material is extracted from domestic wastewater in mechanical septic tanks.

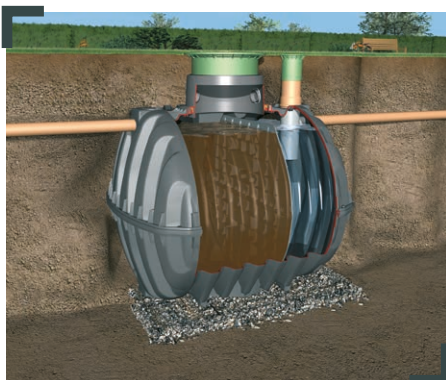
This is pure mechanical cleaning, for which you need 500L of capacity per inhabitant. If you assume a volume of 150L, the wastewater passes through the system in 3 days. These septic tanks must have a total volume of at least 2,000L. A 2,000L system is sufficient for 4 inhabitants, another 500L, must be incorporated for each additional inhabitant.

BENEFITS:

- + Low weight: can also be installed in difficult local conditions without a crane.
- + Reasonable purchase and installation costs.
- + Low maintenance: maintenance or cleaning work can be performed through the shafts.
- + Tanks can be used as rainwater harvesting systems after thorough cleaning.



DESCRIPTION	DIMENSIONS (mm)	INHABITANTS
Graf 2,700L Septic Tank	L 2080 x W 1656 x H 2010	Up to 4
Graf 3,750L Septic Tank	L 2280 x W 1755 x H 2200	Up to 11
Graf 4,800L Septic Tank	L 2280 x W 1985 x H 2430	Up to 18
Graf 6,500L Septic Tank	L 2390 x W 2190 x H 2710	Up to 30



ACCESSORIES

CODE	DESCRIPTION
PEXTNECK	Septic Tank Extension Neck, 600mm Dia. x 1m
PEXTNECK 300MM	Septic Tank Extension Neck, 600mm Dia x 300mm
PSEPTICLID	Septic Tank Lid (Plastic), A15 class
PSAMPCHAMP	Sample Chamber 250mm x 1m

Sewage Treatment Plants

Graf One2Clean dispenses with the unnecessary extras, making it a reliable solution.

BENEFITS:

- + Only one tank with only one chamber required.
- + Less energy consumption and less wear.
- + No mechanical elements in the waste water.
- + No pumps in the waste water.
- + No electrical components in the waste water.
- + Incredibly little sewage sludge.
- + One2Clean is odourless.
- + Low space requirements.
- + 2 years warranty on technology.
- + 10 years warranty on sewage reservoirs.



Scope of supply: Carat Tank with mini tank dome, mini telescope dome and PE lid.

DESCRIPTION	DIMENSIONS (mm)	INHABITANTS	VOLUME (L)
5pe One2Clean	L 2280 x W 1755 x H 1880	5	3,750
7pe One2Clean	L 2280 x W 1985 x H 2110	7	4,800
9pe One2Clean	L 2390 x W 2190 x H 2390	9	6,500
12pe One2Clean	L 3500 x W 2040 x H 2515	12	8,500
15pe One2Clean	L 3520 x W 2240 x H 2575	15	10,000
18pe One2Clean*	L 5380 x W 2190 x H 2390	18	2 x 6,500
19pe One2Clean	L 4000 x W 2420 x H 2755	19	13,000

* 18pe Two Tank System. Larger sizes available on request.

Optional External Cabinet

BENEFITS:

- + Easy access for maintenance.
- + Function checking is simple as the control unit is located next to the system.
- + Ideal solution for large distances from the house (>20 m).
- + Lockable housing in sturdy, weather resistant plastic.
- + Integrated double power socket for easy maintenance.
- + No foundation necessary.



CODE	DESCRIPTION
P107773	Graf One2clean External Cabinet
P107990	Graf One2clean External Cabinet (Small)

Harlequin® HydroClear

Market-leading performance, easier installation, competitive through-life costs, enhanced transportability and storage, product reliability, and robustness are qualities that were factored into the design brief.

Easy to install and maintain with low operating costs, the range has 6 different sizes starting at a **domestic sized 6 population system**, available right up to a commercial **50 population system**.

BENEFITS:

- + **Super quiet** – high performance diaphragm blowers are used and externally housed achieving a virtually silent operation.
- + **Odourless** – the system is hermetically sealed, coupled with a market leading treatment performance eliminates odour.
- + **MBBR technology** – Moving Bed Biological Reactor (MBBR) systems are self-cleaning and unable to become blocked through channelling unlike most fixed film media systems.
- + **Market leading performance** – producing an excellent 97.5% pollutant removal level, the final effluent can be directly discharged into a stream or soakaway.
- + **Low maintenance costs** – chamber one capacity is as much as 66% larger than other plants, making desludging intervals up to three times longer saving the owner significant costs.
- + **Power failure default** – the system keeps performing as a septic tank in the event of a power failure.

**Harlequin®
HydroClear**
SEWAGE TREATMENT PLANT



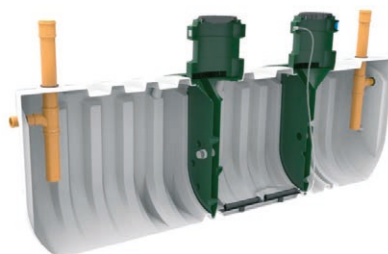
HC6



DESCRIPTION	DIMENSIONS (mm)	POPULATION
HydroClear HC6	L 2400 x W 1200 x H 2000	1-6 (bed house)
HydroClear HC9	L 2900 x W 1620 x H 2000	4-9 (7 bed house)
HydroClear HC12	L 3615 x W 1620 x H 2140	10-12
HydroClear HC20	L 5680 x W 1400 x H 2560	13-20
HydroClear HC30 (2-tank system)	Tank 1: L 4500 x W 1400 x H 2560 Tank 2: L 4500 x W 1400 x H 2560	21-30
HydroClear HC40 (2-tank system)	Tank 1: L 5680 x W 1400 x H 2560 Tank 2: L 4500 x W 1400 x H 2560	31-40
HydroClear HC50 (3-tank system)	Tank 1: L 5680 x W 1400 x H 2560 Tank 2: L 4500 x W 1400 x H 2560 Tank 3: L 3400 x W 1250 x H 2560	41-50



HydroClear HC9



HydroClear HC20



HC30 (2-Tank System)



HC50 (3-Tank System)

Harlequin CAP Treatment Plants

Sewage treatment plants employing Continuous Aeration Plants (CAP) utilising a specialised bio-media system to attain an outstanding pollutant removal rate of 96.2%. The design of this compact system is particularly effective in mitigating prevalent challenges encountered in small sewage domestic plants.

Through continuous aeration, organic matter is efficiently broken down, contributing significantly to the purification process. The bio-media configuration optimises the growth of beneficial microorganisms, ensuring enhanced treatment efficacy and environmental protection.

MODEL	DIMENSIONS (mm)	POPULATION	WEIGHT (kg)
CAP6	L 1660 x W 1600 x H 2180	1-6	275
CAP9	L 1840 x W 1840 x H 2180	6-9	350
CAP12	L 2900 x W 1620 x H 2000	10-12	460
CAP15	L 3615 x W 1620 x H 2140	13-15	600
CAP18	L 3615 x W 1620 x H 2140	16-18	600



CAP6



CAP12



CAP15



Pump Stations

Harlequin Pump Stations have been specifically designed and engineered for water/effluent applications including post wastewater treatment systems, sewage directly from the home and applications requiring a grinder pump.

These UK-made systems are best suited for use in a domestic setup.

BENEFITS:

- + Suitable for domestic use.
- + 24 hours storage.
- + Durable and stable MDPE design.
- + Compact system.
- + Easy to install.
- + Low maintenance.
- + Market leading DAB pump.
- + Simple pipework.
- + Flat base for stability.



DESCRIPTION	DIMENSIONS (mm)	INHABITANTS	VOLUME (L)
450L Pump Station	L 600 x W 600 x H 1700	Extensions etc.	455
800L Pump Station	L 1000 x W 1000 x H 1225	1-5	820
1100L Pump Station	L 1000 x W 1000 x H 1645	1-7	1,140
1550L Pump Station	L 1200 x W 1200 x H 1625	1-10	1,600
NEW 2700L Pump Station	L 1200 x W 1200 x H 3205	Shared domestic/small commercial applications	2,700
3200L Pump Station	L1600 x W1600 x H2000 : 1-18	Shared domestic/small commercial applications	3,300

Each available in effluent, sewage and grinder pump versions.



450 Litre Pump Station



800 Litre Vortex Twin Pump



1100 Litre Grinder Single Pump

PolyDry Crop Drying and Conditioning

PolyDry crop drying and conditioning products help you to ensure that your stored crops remain in perfect condition and free from mites and moulds.

We sell the PolyDry range of plastic crop pedestal ventilation which is the UK's leading grain cooling and conditioning system. Made from durable food grade plastic, heat can be removed and grain cooled to ensure the absolute best price when sold. The pipe is specially perforated for the highest performance aeration of the crop.

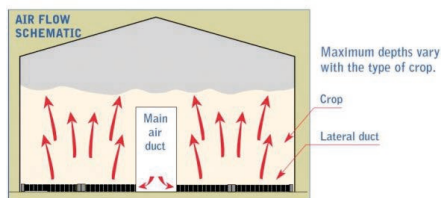
Coupled with this, we can supply a range of state-of-the-art fans for use with both vertical and horizontal ventilation systems.

Other applications include drying potatoes and red beet.



Horizontal On-Floor System

The Horizontal On-Floor PolyDry system for cooling, drying and ventilating is ideal for use with existing main air tunnels.



The durability and robustness of the pipe makes it ideal for replacing traditional steel ducts. The perforations have been designed to prevent the flow of small crops, such as oilseed rape, into the duct. The duct is available in 450 mm (ID) x 6 m lengths and is available with anti-roll couplers and end caps.



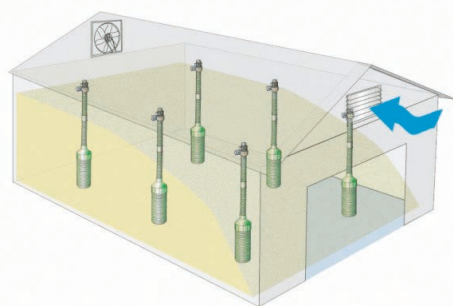


Vertical On-Floor System

PolyDry vertical pedestals are an efficient and low-cost solution to cooling and conditioning most floor stored crops. Each pedestal is made up of a perforated main body section (300 mm), a reducing cone and two 150 mm x 1 m pipes with a connector.

The units work either by blowing air through the crop or by drawing air down through the stored crop into the perforated body section and up through the fan. The system helps keep the crop cool and free from moulds and insects, avoiding the need for applying organophosphates.

The pedestals are spaced to allow bulk loaders to pass between them. They are also visible above the crop, further reducing the likelihood of damage.



Land Drain Coils



Polypipe

APPLICATIONS:



Agriculture



Sports



Civils

BENEFITS:

- + Manufactured from high quality rHDPE.
- + Coils maintain their quality even when exposed to sunlight and freezing conditions.
- + Due to HDPE and advanced profile design:
 - Strong and flexible
 - Allows fast and easy installation
 - Provides excellent water flow
- + Tightly wound coils enable easy stacking and handling.
- + Kitemarked to BS 4962:1989, License No. KM557607.



Perforated Land Drain Coil

CODE	DIAMETER (mm)	DIAMETER (inch)	LENGTH (m)
PLD80100BLK	80	3	100
PLD100100BLK	100	4	100
PLD16050BLK	160	6	50

Unperforated Land Drain Coil

CODE	DIAMETER (mm)	DIAMETER (inch)	LENGTH (m)
P17084700	80	3	100
P17104700	100	4	100
P17164700	160	6	50

Wrapped Land Drain Coil (wrapped in geotextile membrane)

CODE	DIAMETER (mm)	DIAMETER (inch)	LENGTH (m)
PLDW08100	80	3	100
PLD8100	100	4	100
PLDW1650	160	6	50



Land Drain Coil Multi Branches

CODE	DIAMETER (mm)
P80D200	80mm x 80mm
PCDJ10M	80mm x 100mm
PCDJ160M	80mm x 160mm



Land Drain Connectors

CODE	DIAMETER (mm)
P80D104	80
P100D104	100
P160D104	160



Twinwall Pipe



APPLICATIONS:



Agriculture



Sports



Civils

BENEFITS:

- ✦ Manufactured and tested to BBA HAPAS Roads and Bridges Standards.
- ✦ Can be easily cut to the required length on site.
- ✦ Smooth bore delivering excellent flow rates.
- ✦ Weighs only a fraction of the weight of pre-cast concrete pipes, which deliver project savings due to reduced manpower and plant costs.



CODE	PERF/UNPERFORATED	LENGTH (m)	DIAMETER (mm)
P4TW176	Perforated	6	110
P4TW076	Unperforated	6	110
P6TW176	Perforated	6	150
P6TW076	Unperforated	6	150
P9TW176	Perforated	6	225
P9TW076	Unperforated	6	225
P12TW176	Perforated	6	300
P12TW076	Unperforated	6	300
P375TW066*	Perforated	6	375
P375TW046	Unperforated	6	375
P450TW066*	Perforated	6	450
P450TW046	Unperforated	6	450
P600TW066*	Perforated	6	600
P600TW046	Unperforated	6	600
PWEHO2P-750-6M	Unperforated	6	750
PWEHO2P-900-6M	Unperforated	6	900
PWEHO2P-1050-6M	Unperforated	6	1050
PWEHO2P-1200-6M*	Unperforated	6	1200

*Not stocked – ordered as required. 1500mm and above available on request.

Twinwall Fittings

Connectors

CODE	DIAMETER (mm)
P4TW205	100
P6TW205	150
P9TW205	225
P12TW205	300
P450TW205	450



Seals

CODE	DIAMETER (mm)
P6TW117	150
P9TW117	225
P12TW117	300
P450TW117	450
P600TW117	600



End Caps

CODE	DIAMETER (mm)
P6TW750	150
P9TW750	225
P12TW750	300
P450TW750	450
P600TW750	600



Reducers

CODE	DIAMETER (mm)
P6TW099	150mm - 110mm reducer
P9TW095	225mm - 150mm reducer
P12TW093	300mm - 225mm reducer

*Note: Other reducers available on request.



Junctions

CODE	ANGLE	DESCRIPTION
P6TW213	45°	150mm Y Junction
P6TW193	90°	150mm T Junction
P9TW213	45°	225mm Y Junction
P9TW193	90°	225mm T Junction
P9TW227	45°	225mm x 150mm Y Junction
P12TW213	45°	300mm Y Junction
P12TW193	90°	300mm T Junction
P12TW237	45°	300mm x 150mm Y Junction
P12TW240	45°	300mm x 225mm Y Junction

*Note: Other moulded and fabricated junctions available on request.



Bends

CODE	ANGLE	DIAMETER (mm)
P6TW561	90°	150
P6TW563	45°	150
P6TW566	30°	150
P6TW567	15°	150
P9TW561	90°	225
P9TW563	45°	225
P9TW566	30°	225
P9TW567	15°	225
P12TW561	90°	300
P12TW563	45°	300
P12TW566	30°	300



Larger diameter bends available on request.

Stormwater Attenuation and Soakaway Crates



Storm crates are modular units which are used predominantly as below ground storm water attenuation, surface water infiltration and soakaway systems.

They are designed to be stacked together to create a huge structural below ground holding tank or to allow the infiltration of storm water into the ground around them. The void created by the storm crates can then fill up in with storm water during heavy rainfall conditions.

The collected storm water then soaks away slowly into the drainage system or ground water table over a more sustained period. Extensive use of this type of storm water attenuation module has helped relieve pressure on conventional surface water drainage systems in line with the Sustainable Urban Drainage Systems (SUDS) program advocated by the Environment Agency.

Brett Martin StormCrate55

BENEFITS:

- + **StormCrate55** provide a highly effective means of managing storm water, contributing to reducing the risk of flooding.
- + **Rainwater Infiltration:** StormCrate55 can be wrapped in a geotextile which allows stored water to slowly seep into the surrounding ground and back into the water table.
- + **Rainwater Attenuation:** another common practice is to surround StormCrate55 with an impermeable geomembrane to create a sealed underground tank. The outlet from this tank is then controlled to facilitate a slow release of the stored water back into the drainage system over a longer period.

DIMENSIONS:

Volume (Litres): 237.5
 Length: 1200 mm
 Width: 600 mm
 Height: 347 mm
 Weight: 15.5 kg
 Colour: Black
 Material: 100% Polypropylene



GRAF Rainbloc 300

BENEFITS:

- + Cellular rainwater attenuation modules.
- + Lightweight and easy to install in up to 10 layers.
- + Ideal for domestic soakaways.
- + Cost-effective and space saving.
- + 3.3 Storm Crates per 1 m³ storage capacity.
- + High strength crate with lorry bearing of up to 60 tonnes.
- + Fully inspectable for future maintenance when used with Storm Crate Inspect crates.

DIMENSIONS:

Volume (Litres): 300 (Net 285)

Length: 1200 mm

Width: 600 mm

Height: 420 mm

Weight: 18 kg

Colour: Black

Material: 100% Polypropylene



Geotextiles & Geogrid

APPLICATIONS FOR GEOSYNTHETICS:

- + Separating/Strengthening layer under access roads and areas of hard standing.
- + Filter surround for trench drains.
- + Separation to stop the intermixing of dissimilar soil layers.
- + Filtration – allowing the flow of water whilst preventing the passage of soil.
- + Horse arenas – separation of infill materials.
- + Filter surround for infiltration tanks.

FasTrack 609

Polypropylene Woven Geotextile
1500N,
75 g/m²
4.5 m x 100 m roll

KEY FUNCTIONS:

- + **Separation** – prevents intermixing of dissimilar soil layer.
- + **Reinforcement** – resists stresses or reduces deformations.
- + **Erosion control** – creates a barrier that absorbs energy to reduce ground erosion.



FasTrack 609

MultiTrack 1000

Nonwoven Geotextile
1500N
100 g/m²
4.5 m x 100 m roll

KEY FUNCTIONS:

- + **Separation** – prevents intermixing of dissimilar soil layer.
- + **Filtration** – allows passage of fluids whilst retaining soil particles.



MultiTrack 1000

SX Grid Biaxial Geogrid

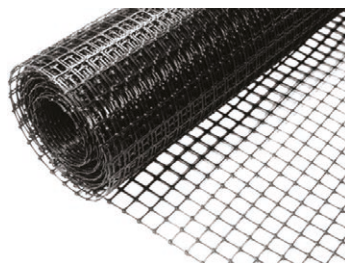
SX Grid is a biaxial geogrid that provides a cost effective solution to solve pavement problems by providing reinforcement to granular sub-bases including compounds, haul road and working platforms in areas of weak or variable soils.

BENEFITS:

- + Very low maintenance system.
- + Cost effective.
- + Efficiencies to be had by utilising larger roll widths with less overlaps.
- + Wider variety of roll sizes available.



CODE	PRODUCT
PGEOTEC1000	MultiTrack 1000, 4.5m x 100m Nonwoven geotextile
P2496004	FasTrack 609, 4.5m x 100m Woven geotextile
PGEGRID3030	4m x 50m, Rigid biaxial geogrid SX 3030



Pipe Drain Inlets & Headwalls

Headwalls

Headwall units are designed to ensure the banks of rivers, streams or ponds are not eroded by discharged water.

The headwalls are manufactured from high-strength, grade 18 GRC. Long fibre GRC gives greater strength-to-weight ratios and enhanced resistance to damage.

CODE	PRODUCT
PB101	Small standard headwall
PB102	Large standard headwall
PB110	Pipe drain inlet with grid



PB110 Pipe drain inlet with grid

Drain Pipe & Fittings



Brett Martin caters for all drain requirements with 110 mm and 160 mm solid pipe and fittings.

All drainage systems are manufactured in the UK to stringent quality standards, with drain pipe and fittings BS EN 1401/BS EN 13476-2 certified, providing the installer with a completely reliable product range that will continue to perform.

Brett Martin Drain systems feature a lip seal within single socket pipe and a market leading captive seal within drain fittings which secures against dislodgement and makes jointing easier, ensuring joints remain leak free for years to come.



BENEFITS:

- + Featuring products kitemarked to BS EN 1401-1 or BS EN 13476-2.
- + Captive seal within drain fittings.
- + Manufactured under a quality management system certified to ISO 9001:2015.
- + Choice of 110 mm and 160 mm pipe and fittings.



Pipes

CODE	DESCRIPTION
PB4403	110mm x 3m Single Socket pipe
PB4406	110mm x 6m Single Socket pipe
PB6606	160mm x 6m Single Socket pipe



Perforated Pipe

CODE	DESCRIPTION
PB4023	110mm x 6m Blown Socket Perforated Pipe



Couplers

CODE	DESCRIPTION
PB5001	110mm Double Socket PVC (BS) Coupler
PB50015	110mm Double Socket PVC Slip Coupler
PB7001	160mm Double Socket PVC (BS) Coupler
PB70015	160mm Double Socket PVC Slip Coupler



Single Socket Bends

CODE	DESCRIPTION
PB5041	110mm x 87½°
PB5061	110mm x 45°
PB5071	110mm x 22½°
PB5081	110mm x 11¼°
PB7041	160mm x 87½°
PB7061	160mm x 45°



PB5041



PB5061



PB5071



PB5081



PB7041



PB7061

Double Socket Bends

CODE	DESCRIPTION
PB4031	110mm x 87½°
PB4131	110mm x 87½° Rest Bend (Long Radius)
PB4041	110mm x 45°
PB4051	110mm x 22½°
PB4061	110mm x 11¼°
PB6031	160mm x 87½°
PB6041	160mm x 45°



PB4031



PB4131



PB4041



PB4051



PB4061



PB6031



PB6041

Long Radius Bends

CODE	DESCRIPTION
PB5031	110mm x 87½° Long Radius Plain End Bend
PB5032	110mm x 45° Long Radius Plain End Bend
PB5033	110mm x 22½° Long Radius Plain End Bend



PB5031



PB5032



PB5033

Branches

CODE	DESCRIPTION
PB5101	110mm x 87½° Double Socket Branch
PB5111	110mm x 45° Double Socket Branch
PB4081	110mm x 87½° Triple Socket Branch
PB4091	110mm x 45° Triple Socket Branch
PB7092	160mm x 110mm 87½° Triple Socket Branch
PB7102	160mm x 110mm 45° Triple Socket Branch
PB6081	160mm x 160mm 87½° Triple Socket Branch
PB6091	160mm x 160mm 45° Triple Socket Branch



PB5101



PB5111



PB4081



PB4091



PB7092



PB7102



PB6081



PB6091

Adaptors & Plugs

CODE	DESCRIPTION
PB5121	110mm Socket Plug
PB7131	110mm Single Socket Level Invert Taper



PB5121



PB7131

Bottle Gullies

CODE	DESCRIPTION
PB1003	Back Inlet Roddable Gully 90° Outlet Square Grid*
PB1103	90° Outlet Roddable Gully, Square Grid*

*Pedestrian areas only.



PB1003



PB1103

Tubular Gullies/Hoppers (including Grid)

CODE	DESCRIPTION
PB1300	110mm Low Level P Trap Gully
PB1013	110mm Low Trapped Gully
PB1031	Integral Rectangular Hopper
PB1071	160mm x 110mm Square Hopper
PB1061	160mm x 160mm Square Hopper with 110mm Solvent Socket



PB1300



PB1013



PB1061



PB1031



PB1071

Yard Gully

CODE	DESCRIPTION
PB6300	300mm Dia. x 600mm Invert Trapped Yard Gully
PRGSB	Aluminium Silt Bucket



PB6300



PRGSB

Trapped Road Gullies

CODE	DESCRIPTION
PB8400	750mm Invert x 450mm Dia. Road Gully
PB9000	900mm Invert x 450mm Dia. Road Gully



PB8400

PB9000

Access Fittings

CODE	DESCRIPTION
PB5104	110mm Single Socket Access Pipe
PB5591	110mm Oval Rodding Point, Socketed & Sealed
PUSA62	110mm Screw Access Cover
PB6691	160mm Oval Rodding Point, Socketed and Sealed
PB5592	110mm Square Rodding Point, Socketed and Sealed



PB5104



PB5591



PUSA62



PB6691



PB5592

Access & Inspection (5 inlets)

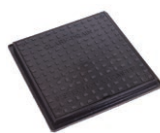
CODE	DESCRIPTION
PUG437	320mm Dia. Chamber Base 110mm (220mm Invert)
PUG438	320mm Dia. Chamber Riser 400mm High c/w Seal
PUG436	300mm Locking Square Cover & Frame 35kN
PB5494	450mm Dia. Chamber Base 110mm (225mm Invert)
PB5696	450mm Dia. Chamber Base 160mm (225mm Invert)
PB5397	450mm Dia. Chamber Riser (315mm Invert) †
PB5398	450mm Sealing Ring (For Use with PB5397) †
PB6255	450mm Dia. Secured Plastic Cover for Driveways 50kN*
PUG512	450mm Dia. Secured Square Cover for Driveways
PB5000	110mm Spare Plug (Chamber)
PB5100	160mm Spare Plug (Chamber)



PUG437



PUG438



PUG436



PB5494



PB5696



PB5397



PB5398



PB6255



PUG512



PB5000



PB5100

† Optional sealing ring available (item PB5398).

* For use in driveways - recommend bedding in concrete.

Pipe Lubricant

CODE	DESCRIPTION
PB9333	Brett Lubricant Blue 500g



Covers and Frames

Gully Grates

CODE	DESCRIPTION
PDU144	420mm x 420mm x 100mm Traffic Flow D400 gully grate
PDU143	420mm x 420mm x 100mm Double Tri D400 gully grate
PGULLY-GRATE	450mm x 390mm D400 anti-theft gully grate
PB6302	Yard gully grate, 12.5 tonnes



PDU144



PDU143



PGULLYGRATE



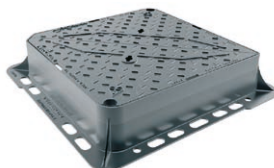
PB6302

Manhole Covers

CODE	DESCRIPTION
PMAN-HOLEEACH	600mm x 600mm x 100mm D400 manhole cover
PDU001	600mm x 600mm x 100mm D400 manhole cover
PECOM203C	450mm Dia. B125 cover and frame
PUCL125	450mm Dia. B125 cast iron cover and frame
PECOM297ST	450mm x 450mm x 40mm C250 cover and frame
PECOM299	600mm x 600mm x 40mm C250 cover and frame



PDU001



PMANHOLEEACH



PECOM203C



PUCL125



PECOM297ST



PECOM299

Drainage Adaptor/Couplings

Fernco (previously known as Flexseal) Adaptor Couplings, sometimes referred to as reducer couplings, are designed to connect unadopted drainage pipes with different outside diameters – connecting larger drainage pipes to smaller drainage pipes and vice versa.

These simple yet effective connectors can be tightened onto pipes using a nut driver and torque wrench, creating a permanent airtight and watertight seal in just seconds.

- + Provides a quick and efficient method of connecting pipes of different materials and outside diameters.
- + Reliable, tried, and tested products.
- + Large variety of sizes for a multitude of pipe configurations.



CODE	DESCRIPTION
P112-112	Fernco Coupling 100mm x 100mm
PAC4000	Fernco Adaptor 110mm PVCu x 100mm clay
PAC6000	Fernco Adaptor 160mm PVCu x 150mm clay
PAC1362	Fernco Adaptor 121mm-136mm/100-115
PAC1452	Fernco Adaptor 130mm-145mm/100-125
PAC1922	Fernco Adaptor 170mm-192mm/100-122
PAC1924	Fernco Adaptor 170mm-192mm/144-160
PSITU110SBR	Fernco In Situ Seal 110mm
PSITU160SBR	Fernco In Situ Seal 160mm



FERNCO ADAPTOR COUPLING



FERNCO DRAIN COUPLING



FERNCO SHEAR BANDED COUPLINGS

Defending environments, buildings and infrastructure with proven products.

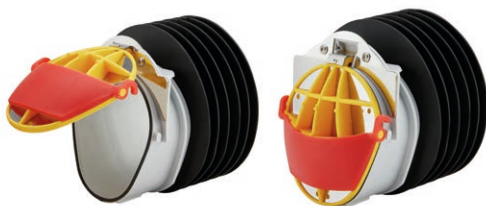
Offering a range of pioneering solutions including Flap Valves & Penstocks to protect the built environment as well as domestic products such as Non-Return Valves, Backwater Valves, Anti-Flood Air Bricks, Anti-Flood Air Brick Covers and Flood Bags to help protect individual properties, buildings and structures.

Non-Return Valves

Fernco's Non-Return Valves allow sewer or surface water materials to freely flow in the direction of the systems mains but block backflow of those materials in the opposite direction in instances, such as, flooding.

BENEFITS:

- + Simple push-fit installation into existing manhole.
- + Unobtrusive when installed.
- + Two sizes available to suit DN100 and DN150 pipes.
- + Universal for all pipe materials within the products size range.
- + Protects against back flow and pests, such as rats and other rodents.
- + Stainless steel reinforced flap for added protection against rodent infestation.
- + NRV100 WRc Approved.

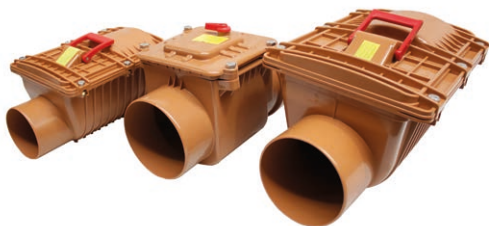


Backwater Valves

Fernco's Back Water Valves allow sewer or surface water materials to freely flow in the direction of the systems mains but block backflow of those materials in the opposite direction in instances, such as, flooding.

BENEFITS:

- + Easy to install.
- + Maintenance free.
- + Removable lid for inspection.
- + Easy to operate locking mechanism.
- + Robust design and materials.
- + Protects against back flow and pests, such as rats and other rodents.
- + Stainless steel flaps as standard.
- + A range suitable for stormwater and sewer applications.
- + Complies with the guidelines set out in BS EN 13564.



Flap Valves

HDPE Flap Valves from Fernco provide a high strength, low-cost solution, preventing backflow through drain or sewerage pipes.

A full range of high-quality standard and bespoke flap valves are available, ready to defend environments, homes, and properties against rising water levels.

BENEFITS:

- + Bespoke valves can be custom built to customer's requirements.
- + Low cracking heads.
- + Easy and quick installation – no need for grout between frame and wall.
- + Robust and rigid construction.
- + UV stable.
- + Fully recyclable.
- + Manufactured from high-density polyethylene (HDPE).
- + HDPE has almost no weigh-in value making it undesirable to thieves.
- + Materials are corrosion resistant.
- + Little to no maintenance required.
- + Manufactured to DIN 19569-4.



Penstocks

HDPE Penstocks from Fernco provide a high strength, easy to install solution to control the flow of water and wastewater.

A complete range of high-quality, permanent, long lasting, and reliable penstocks.

BENEFITS:

- + Easy and quick installation.
- + Easier to lift and transport.
- + Formed from only pure materials (never from recycled materials, giving a much lower carbon footprint).
- + UV stable – will not become brittle in direct sunlight.
- + Much reduced head loss (typically 10% of a cast iron and 30% of a Coplastix valve).
- + Can withstand and absorb debris strikes.
- + HDPE has almost no weigh-in value making it undesirable to thieves.
- + Suitable for Pumped Outfalls with integral stroke limiters and vent pipes.



NEW Fernco Floodbags **FLOODbag**

Fernco Floodbags are absorbent bags filled with a super absorbent polymer (SAP), for protecting properties against flooding.

This ideal solution is easy to store, and is a more effective alternative to traditional sandbags that often fall short of expectations.

- + Effectively block or divert floodwater from entering property thresholds.
- + Highly absorbent material and blocks the passing of further floodwater once fully absorbed.
- + Soaks up leaks and spillages in difficult areas.
- + Quick and easy installation – 3 simple steps.
- + Easy to transport and store.

BENEFITS:

- + Each row of flood bags will keep around 18cm or 7 inches of water out.
- + Absorbs around 20 litres of water.
- + Filled with a special superabsorbent polymer.
- + Pre-soaked Fernco Floodbags will expand in around 5 minutes.
- + Vacuum-packed for easy storage and distribution.
- + More uniform in size than sandbags.
- + Multi-functional and flexible to be used both inside and outside.
- + 5 bags will cover 8.5 ft in floor space.



Anti-Flood Air Brick Cover

Fernco's Anti-Flood Air Brick Covers are easy to fit, and an essential flood protection solution for low level air bricks to protect homes from flood water in seconds.

BENEFITS:

- + Flood protection for any 9x3 inch existing air brick, grille, or grating.
- + Easy to install in seconds.
- + Extra strength retaining clips to prevent snapping.
- + DIY-friendly with no expertise or concrete required.
- + Compact design for easier storage.
- + Bright red colour for your attention.
- + Integrated seal within the cover to create watertight fit to the frame.
- + Can be cleaned and reused.



MDPE Water Pipe

CODE	DIAMETER (mm)
P20PW100	20mm x 100m blue MDPE
P20PW150	20mm x 150m blue MDPE
P25PW100	25mm x 100m blue MDPE
P25PW150	25mm x 150m blue MDPE
P32PW100	32mm x 100m blue MDPE
P32PW150	32mm x 150m blue MDPE
P50PW100	50mm x 100m blue MDPE
P50PW150	50mm x 150m blue MDPE
P50PW50	50mm x 50m blue MDPE
P63PW050	63mm x 50m blue MDPE
P63PW100	63mm x 100m blue MDPE

Black and larger diameter also available on request.

Blue water pipe (previously known as alkathene pipe) is manufactured from Medium Density Polyethylene (MDPE).

Blue MDPE water pipe has been WRAS approved to deliver potable (drinking) water services for use in the UK.

It is a widely used pipe material due to its flexibility, durability, and chemical resistance. Typical applications include drinking water mains, gas mains, hydro power schemes and agriculture.



Water Compression Fittings

The Philmac Metric/Imperial™ compression fitting is a revolutionary step forward for PE pipe joining. Connections can now be made to both Metric (BS6572/BS6730) and Imperial PE pipe (BS1972/3284 and IRS 135 Heavy Gauge) from the one fitting from either end.

The innovative design means that inserts are no longer required to connect imperial pipe. Removing the need for dedicated fittings and inserts, Metric/Imperial™ provides the ultimate in flexibility, reducing both inventory and complexity.

Philmac fittings are WRAS approved for above and below ground use.

Pipe liners are required up to 63 mm for WRAS approval.

Philmac®

The connection you can trust.

WRAS
WATER REGULATIONS ADVISORY SCHEME

Metric/Imperial Joiner POL x POL

CODE	SIZE
P9122	20mm / ½"
P9133	25mm / ¾"
P9144	32mm / 1"
P9155	40mm / 1¼"
P9166	50mm / 1½"
P9177	63mm / 2"



Metric/Imperial Reducing Joiner POL x POL

CODE	SIZE
P9132	25mm / ¾" x 20mm / ½"
P9142	32mm / 1" x 20mm / ½"
P9143	32mm / 1" x 25mm / ¾"
P9175	63mm / 2" x 40mm / 1¼"



Metric/Imperial End Connector POL x MI BSP

CODE	SIZE
P9221	20mm / ½" x ½" BSP
P9232	25mm / ¾" x ¾" BSP
P9243	32mm / 1" x 1" BSP
P9265	50mm / 1½" x 1½" BSP
P9275	63mm / 2" x 1½" BSP
P9276	63mm / 2" x 2" BSP



Metric/Imperial End Connector POL x FI BSP

CODE	SIZE
P9821	20mm / ½" x ½" BSP
P9832	25mm / ¾" x ¾" BSP
P9843	32mm / 1" x 1" BSP
P9865	50mm / 1½" x 1½" BSP
P9876	63mm / 2" x 2" BSP



Metric/Imperial Tee – Equal POL x POL

CODE	SIZE
P9322	20mm / ½"
P9333	25mm / ¾"
P9344	32mm / 1"
P9366	50mm / 1½"
P9377	63mm / 2"



Metric/Imperial Reducing Tee – Unequal POL x POL

CODE	SIZE
P9343	32mm / 1" x 32mm / 1" x 25mm / ¾"
P9363	50mm / 1½" x 50mm / 1½" x 25mm / ¾"
P9364	50mm / 1½" x 50mm / 1½" x 32mm / 1"



Metric/Imperial Tee POL x FI BSP

CODE	SIZE
P9443	32mm / 1" x 1" BSP
P9454	40mm / 1 1/4" x 1 1/4" BSP
P9455	40mm / 1 1/4" x 1 1/2" BSP
P9476	63mm / 2" x 2" BSP



Metric/Imperial Elbow POL x FI BSP

CODE	SIZE
P9621	20mm / 1/2" x 1/2" BSP
P9631	25mm / 3/4" x 1/2" BSP
P9632	25mm / 3/4" x 3/4" BSP
P9642	32mm / 1" x 3/4" BSP
P9643	32mm / 1" x 1" BSP
P9654	40mm / 1 1/4" x 1 1/4" BSP



Metric/Imperial Elbow POL x POL

CODE	SIZE
P9522	20mm / 1/2"
P9533	25mm / 3/4"
P9544	32mm / 1"
P9566	50mm / 1 1/2"
P9577	63mm / 2"



Metric/Imperial Elbow POL MI BSP

CODE	SIZE
P9721	20mm / 1/2" x 1/2" BSP
P9732	25mm / 3/4" x 3/4" BSP
P9743	32mm / 1" x 1" BSP



Metric/Imperial End Cap

CODE	SIZE
P9029	20mm / ½"
P9039	25mm / ¾"
P9049	32mm / 1"
P9069	50mm / 1½"
P9079	63mm / 2"



Metric/Imperial Wall Plate Elbow Plastic

CODE	SIZE
P9022	20mm / ½" x ½" BSP
P9031	25mm / ¾" x ½" BSP
P9032	25mm / ¾" x ¾" BSP



Hose Union Bib Tap

CODE	SIZE
TAPA	½" c/w double check valve
TAPB	¾" c/w double check valve



Hose Union

Joiner PE x Copper/PEX Push Fit

CODE	SIZE
P1321	20mm / ½" x 15mm
P1331	25mm / ¾" x 15mm
P1332	25mm / ¾" x 22mm



Arctic Ice Resistant Bib Tap

CODE	SIZE
P8021	½" BSP
P8022	¾" BSP



Arctic Ice Resistant

Metric/Imperial Stopcock POL x POL

CODE	SIZE
P2822	20mm / ½"
P2833	25mm / ¾"
P2844	32mm / 1"



MDPE Liners

CODE	SIZE
P78002	20mm
P78003	25mm
P78004	32mm
P78006	50mm
P78007	63mm



MDPE Liners

Metric/Imperial Reducing Sets

CODE	SIZE
P98032	25mm / ¾" x 20mm / ½"
P98042	32mm / 1" x 20mm / ½"
P98043	32mm / 1" x 25mm / ¾"
P98063	50mm / 1½" x 25mm / ¾"
P98064	50mm / 1½" x 32mm / 1"
P98073	63mm / 2" x 25mm / ¾"
P98074	63mm / 2" x 32mm / 1"
P98076	63mm / 2" x 50mm / 1½"



Valves

Metric/Imperial Ball Valve POL x POL (¼ Turn)

CODE	SIZE
P95272	20mm / ½" (16mm Nominal Bore)
P95273	25mm / ¾" (19.5mm Nominal Bore)
P95373	32mm / 1" (19.5mm Nominal Bore)



Ball Valve F.I. x F.I. BSP

CODE	SIZE
P55002	¾" F.I. x ¾" F.I.
P55003	1" F.I. x 1" F.I.
P55005	1½" F.I. x 1½" F.I.
P55006	2" F.I. x 2" F.I.



Ball Valve

Air Release Valve F.I. BSP

CODE	SIZE
P55033	1" BSP



Air Release Valve

Single Check Non-Return Valve F.I. BSP x F.I. BSP

CODE	SIZE
P55022	3/4" F.I. x 3/4" F.I.
P55023	1" F.I. x 1" F.I.
P55026	2" F.I. x 2" F.I.



DZR Double Check Valve F.I. BSP x F.I. BSP

CODE	SIZE
P11202	3/4" F.I. x 3/4" F.I.
P11303	1" F.I. x 1" F.I.



Universal Transition Joiner UTC x POL

CODE	SIZE
P1032	15-21mm x 20mm / 1/2"
P1033	15-21mm x 25mm / 3/4"
P1043	21-27mm x 25mm / 3/4"
P1053	27-34mm x 25mm / 3/4"
P1054	27-34mm x 32mm / 1"
P1074	34-39mm x 32mm / 1"
P1064	39-43mm x 32mm / 1"
P1086	47-49mm x 50mm / 1 1/2"
P1097	59-61mm x 63mm / 2"



Universal Transition Double Ended Repair Joiner

CODE	SIZE
P1144	21-27mm x 21-27mm
P1166	39-43mm x 39-43mm



Threaded Fittings

Bush – Reducing

CODE	SIZE
P4121	¾" x ½" BSP
P4132	1" x ¾" BSP
P4143	1¼" x 1" BSP
P4154	1½" x 1¼" BSP
P4164	2" x 1¼" BSP
P4165	2" x 1½" BSP
P4186	3" x 2" BSP



Nipple

CODE	SIZE
P4222	¾" BSP
P4233	1" BSP
P4255	1½" BSP
P4266	2" BSP



Reducing Nipple

CODE	SIZE
P4254	1½" x 1¼" BSP
P4263	2" x 1" BSP
P4265	2" x 1½" BSP



Male Threaded Tank Connector with Female Inlet

CODE	SIZE
PRXTTI15	½" BSP
PRXTTI20	¾" BSP
PRXTTI25	1" BSP
PRXTTI32	1¼" BSP
PRXTTI40	1½" BSP
PRXTTI50	2" BSP



Plug

CODE	SIZE
P4055	1½" BSP



IBC Swivel-IT Adaptors

CODE	SIZE
P60UD10B	2" x 1" F.I. BSP



Pipe Cutter

CODE	SIZE
P1769	Up to 32mm (medium)
P1770	Up to 63mm (large)



Spanner

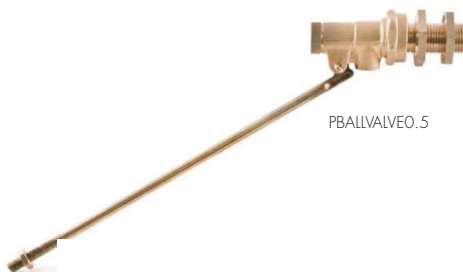
CODE	SIZE
P7024	20 to 32mm 'Y' spanner
P7047	32 to 63mm 'C' spanner



Water Fittings

Valves and Floats

CODE	SIZE
PBALLVALVE0.5	High pressure float ball valve brass piston – side entry 1/2"
P075HPBVALVE	High pressure float ball valve brass piston – side entry 3/4"
P1PARTBALLVALVE	High pressure float ball valve brass piston – side entry 1"
P4.5FLOAT	Plastic Float with Brass Insert – 4 1/2"
P6FLOATEACH	Plastic Float with Brass Insert – 6"
P8FLOAT	Plastic Float with Brass Insert – 8"
PPOLYFLOAT12	Plastic Float with Brass Insert – 12"
TAPA	Hose Union Bib Tap – 1/2" (WRAS approved)
TAPB	Hose Union Bib Tap – 3/4" (WRAS approved)
PTFEROLL	PTFE Thread Sealing Tape – 12mm x 12m (WRAS approved)



PBALLVALVE0.5



P075HPBALLVALVE



P1PARTBALLVALVE

Boundary Boxes



Atlas Matrix Plus Boundary Box

- + Easy to install.
- + For 1½" BSP concentric meters = up to Q3 4.0 m³/hr.
- + Visibility and access to meter.
- + AMR compatible.
- + Flexible connections.
- + Watertight.
- + 16 bar pressure rating.
- + Sealed telescopic box.
- + Frost free -13°C.
- + BS 5834-1:2017.

CODE	CONNECTION	SHUT OFF	HEIGHT (MM)
PBOUNDARY BOX25	25mm PF	¼ Turn Valve, Grade C Lid	470-850
PBOUNDARY BOX32	32mm PF	¼ Turn, Valve Grade C Lid	470-850



Boundary Box Water Meter

A manifold cold water meter with a polymer body and pulse output facility.

- + Cold Water Meter Max Temp – 30°C.
- + Flow Rate – 3.125 m³/h.
- + Material – Polymer.
- + Max. Operating Pressure – 16bar.
- + Pulsed Facility – Yes.
- + Size – G1. ½".

CODE	DESCRIPTION
P25mmwatermeter	V210 Manifold Water Meter 1.5" BSP



Underground Stopcocks

CODE	DESCRIPTION
PSTOPCOCK25MM	25mm Push fit Brass U/G Stopcock
PSTOPCOCK32MM	32mm Push fit Brass U/G Stopcock
PSTOPCOCUGFI2"	2" U/G FI Stopcock
PSTOPCOCUGFI50MM	50mm U/G FI Stopcock



Surface Boxes

CODE	DESCRIPTION
PSTOPTAP0008656	140mm x 115mm x 80mm Cast Iron Stop Tap Box
PDU077	150mm x 150mm x 100mm D400 Surface Box



PDU077



PSTOPTAP0008656

Utility Ducting & Accessories

Ducting Lengths/Sticks

CODE	DESCRIPTION
P110BLACK6M	110mm x 6m Black Electric Duct
P150BLACK6M	150mm x 6m Black Electric Duct

*Other colours and diameters available to order.

Drawcord

CODE	DESCRIPTION
PDC220	6mm x 450m drawcord on drum



Marker Tape

CODE
PWARNTAPWATER
DESCRIPTION
Assorted Warning Tape



Flexi Ducting

CODE	DESCRIPTION
PRC63X50BE	63mm x 50m Black Electric Coil Duct c/w Drawcord
PRC110X50BE	110mm x 50m Black Electric Coil Duct c/w Drawcord
PRC63X50PMCP	63mm x 50m Purple Electric Coil Duct c/w Drawcord
PRC110X50PMCP	110mm x 50m Purple Electric Coil Duct c/w Drawcord

*Blue, green, yellow and orange also available to order.



Black
Domestic Mains Electric



Blue
Water Pipes



Yellow
Gas Service



Green
Fibre Optics, Broadband



Purple
Motorway
Communications/Street
Lighting (Scotland)



Orange
Street Lighting/
Traffic Signal

GREEN HORIZONS

Our strategy seeks to address every pillar of sustainability; people, planet and profit.

We continue to invest in new research and innovation within each of these pillars, which our five insight reports outline. Sustainability is embedded into every Agrii product and service; from our low carbon fertiliser range to our expanding environmental offering.



You can view the Insight Reports and latest Green Horizons updates at www.agrii.co.uk/greenhorizons.

Protection of Water Resources

Water is a key 'public good' listed under the Government's 25 Year Environment Plan. Responsible use of crop protection products, and reduced reliance on them, both have a key role to play in maintaining and improving water resource quality on and near our farms.

The introduction of rainwater harvesting systems is one way that the farm's vital water resources can be preserved. They have the obvious draw of mains water savings for those with indoor cattle, pigs or poultry, but faster sprayer filling, fewer spray pump and line problems in hard water areas and no need for water conditioners, are now also providing additional arable attractions in the drive towards greater sustainability.

CASE STUDY

Rainwater Harvesting Pays Dividends For Angus Farmer

At North Mains of Dun, harvesting rainwater with an Agrii system is saving David and Jenny Warden around a third of the annual mains water bill for their mixed arable, pig and soft fruit business.

Installed 10 years ago, the 10,000 litre above-ground tank system has already repaid the family's investment many times over and still has plenty of life left in it.



"Mains water is expensive," says David Warden. "Especially when you're fattening 3000 pigs a year, each drinking 6-7 litres a day and growing strawberries, blackberries, raspberries and blueberries."

"We have a 4 million gallon irrigation pond filled by natural offline water abstraction from our local watercourse for the fruit we grow as part of Angus Growers."

"Alongside this, capturing rainwater from our 800m² livestock shed roof is invaluable. With our pigs alone consuming over 1.5 million litres of water each year, we reckon it's saving us buying around a third of what we need."

"Harvesting water from the roof helps restrict the pressure intense rainfall puts on our farm drainage system," he adds. "So, it's good for the environment as well as our business. Being as sustainable as possible in every way is essential for a small farm like ours. It's all about making the very most of every resource we have and wasting as little of anything as we can – most importantly the water we get free of charge."

Top Tips

if you're considering rainwater harvesting

- + Match tank capacity carefully to roof area and local rainfall;
- + Site tanks conveniently for both the buildings serving them and sprayer access;
- + Place above-ground tanks on a solid concrete;
- + Install good quality filters to intercept debris and help oxygenate the water;
- + Employ calmed inlets to prevent incoming water disturbing any sediment;
- + Leave enough space between the guttering and top of the tank for the filter; and,
- + Check what, if any, legislative requirements may be involved.

Agrii can help with all of the above – please get in touch.

For more case studies and information on protection of water resources, please visit www.agrii.co.uk/greenhorizons.

For further information or to order, please speak to your usual Agrii contact or get in touch with our Tanks & Drainage Solutions Team:



01480 418333



ATDS@agrii.co.uk



www.agrii.co.uk/products-services/pipes-and-drainage

